

# BETWEEN THE LINE

---

**Prize** Honorable Mention in Interior Design / Conceptual Interior

---

**Firm Location** Hsinchu , Taiwan

---

**University/School** China University of Technology

---

**Lead Architect** Pei Yee Toh

---

**Design Team** Pei Yee Toh, Chung Chiang

---

A co-working space between Interior Design Studio and Weave Design Studio. The idea comes from the disassembly of knitting process. The intersection of three strands of wool represent the symbiotic relationship between the two fields. At the same time, combined with the concept of biophilic design, the three parties crossing each other to strengthen the connection, creating a shared space between nature and human. We are using the ecological materials to create a healthy space to workers in order to increase the working quality.

**The Architecture MasterPrize  
Celebrating the best in International  
Architecture**

© 2022 The Architecture MasterPrize

2022 WINNERS ANNOUNCED



# ARCHITECTURE MASTERPRIZE



**Concept:**

<b>Prephase</b>			
<b>Process</b>	winding	rearrange plate nails	with wool to become style of floor
<b>Product</b>	the product	become straight line	high-low planning

**Area Divided:**

	Interior Design Area	15%
	Weave Design Area	15%
	Shared Area	60%
	Private Area	10%

**Target:**

	Light		Natural light		Interactivity		Freedom / Shared
--	-------	--	---------------	--	---------------	--	------------------

**Biophilic Design:**

	Used of natural materials		reduce CO <sub>2</sub>		control temperature		increase working quality
--	---------------------------	--	------------------------	--	---------------------	--	--------------------------

**Materials:**

	Low-e Glass		Wood Plastic Composites		Diatomite		Solar Panels		Autoclaved Lightweight Concrete		Pandaomo Floor		Safety Net
--	-------------	--	-------------------------	--	-----------	--	--------------	--	---------------------------------	--	----------------	--	------------

**Working Style:**

	Communication		Standing		On the Water		Sitting / Lying
--	---------------	--	----------	--	--------------	--	-----------------

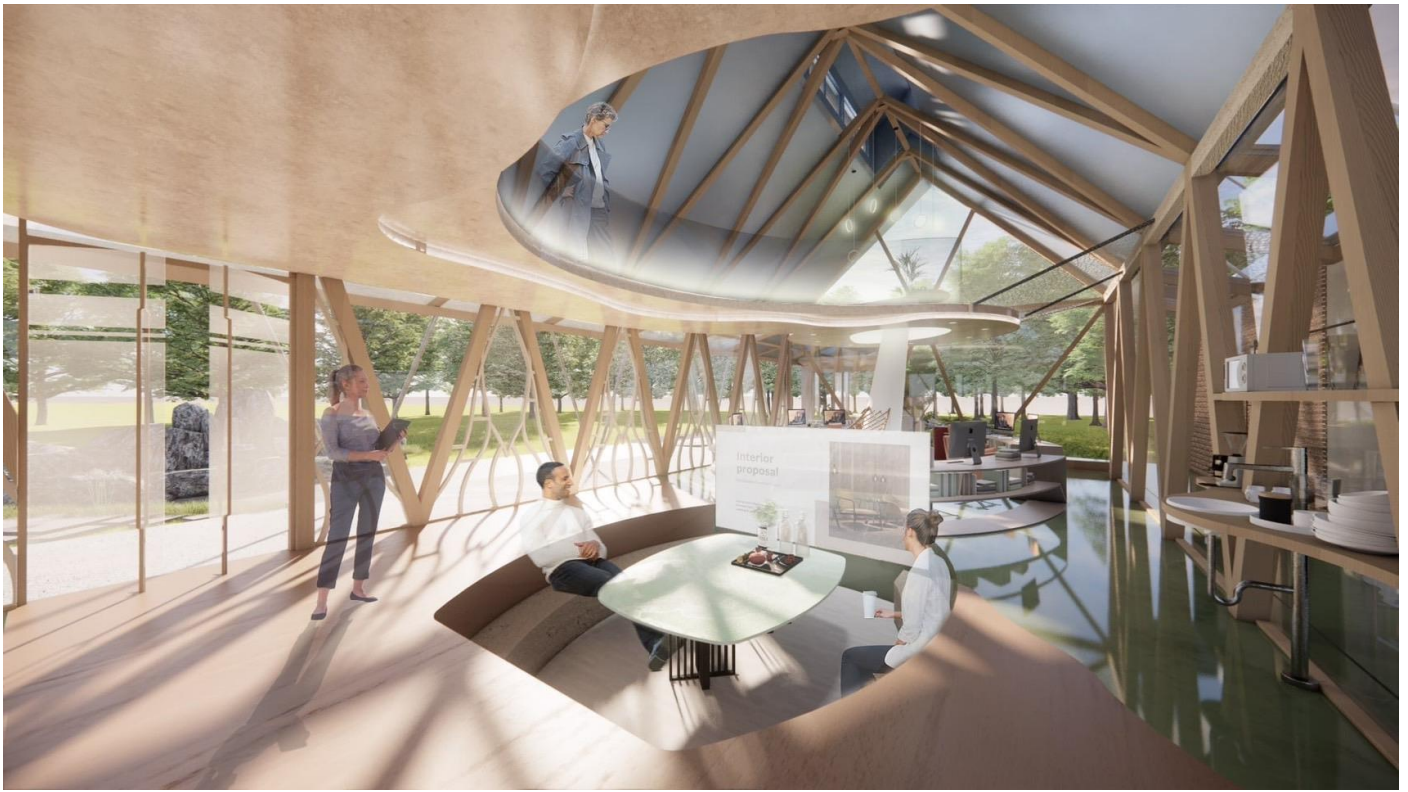
**1<sup>st</sup> FL S:1/100 CM**

**2<sup>nd</sup> FL S:1/100 CM**

- Water Work Area
- Discuss Area
- Pantry
- Weave Design Office Area
- Interior Design Office Area
- Multi-function Area
- Weave Design Studio
- Leisure Room
- Disabled Toilet
- Toilet
- Interior Design Studio
- Reading Area







1<sup>st</sup> FL S:1/100 CM

- 1. Water Work Area
- 7. Weave Design Studio
- 2. Discuss Area
- 8. Leisure Room
- 3. Pantry
- 9. Disabled Toilet
- 4. Weave Design Office Area
- 10. Toilet
- 5. Interior Design Office Area
- 11. Interior Design Studio
- 6. Multi-function Area
- 12. Reading Area

2<sup>nd</sup> FL S:1/100 CM

### Concept:

**Prophase**  
3 strands of wool

**Process**  
winding

**Product**  
the product

**Area Divided:**

- Interior Design Area 15%
- Weave Design Area 15%
- Shared Area 60%
- Private Area 10%

**Target:**

- Light
- Natural light
- Interactivity
- Freedom / Shared

**Biophilic Design:**

- Used of natural materials
- reduce CO<sub>2</sub>
- control temperature
- increase working quality

**Materials:**

- Low-e Glass
- Wood Plastic Composites
- Diatomite
- Solar Panels
- Autoclared Lightweight Concrete
- Pandomo Floor
- Safety Net

**Working Style:**

- Communication
- Standing
- On the Water
- Sitting / Lying















